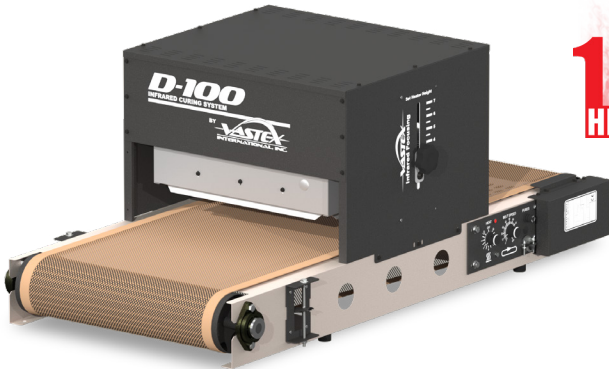


# ENTRY LEVEL INFRARED DRYERS

## D1-SERIES



**15 YEAR  
HEATER WARRANTY**



**CE CERTIFIED**  
BY CERTIFICATION EXPERTS  
THE NETHERLANDS

**Heater**  
**Wattage**  
**Belt Width / Conveyor Length**  
**Heater Width\*\***  
**Power Requirements**  
**Chamber (tunnel) Length**  
**Assembled Dimensions**  
  
**Plastisol @ 25 secs.\***  
**Waterbased/Discharge @ 70 secs.\***

### D-100

16" x 16" (40.64 x 40.64 cm)  
1,625 watts (1.625 kW)  
18" (45.7cm) x 46" (1.17m)  
16" (40.6cm)  
120V, NEMA 5-15P, 12.5A  
240V, NEMA 6-15P or Int'l plugs, 6.5A

### D-1000

16" x 20" (40.64 x 50.8 cm)  
2,050 watts (2.05 kW)  
26" (66cm) x 56" (1.43m)  
20" (50.8cm)  
120V, NEMA 5-20P, 16.5A  
240V, NEMA 6-15P or Int'l plugs, 8.2A

### CURE TIMES

110/hr	110/hr
50/hr	50/hr



Adjustable belt speed and temperature for better control.



Tilting heater for curing non-flat items such as hats.

Our dense coil pattern, heater shields and a 6.35 watt per sq-in infrared heater eliminates hot and cold spots.

For more compact shipping, the D-100 and D-1000 are partially assembled. Optional factory assembly at additional charge.

## Features

**SMART** Teflon coated fiberglass belt with tracking system  
**ADJUSTABLE** Speed, temperature, heater height and tilt  
**FAST** 110+\* shirts per hour with plastisol and 50+\* with discharge  
**PRECISE** Powerful infrared heater with tight coil pattern and heat shields  
**VALUABLE** Best warranty, high quality, exceptional service  
**COMPACT** Total footprint is less than 8 sq.ft (2.44 sq.m) on the D-100 and about 10 sq.ft. (3 sq.m.) on the D-1000

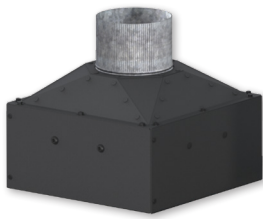
## Options

- S1-27 stand with wheels (D-100 only)
- S1-27 w/ S127-DEMT stand with wheels (D-1000 only)
- EXH-D exhaust for new and existing D-100 and D-1000 dryers

\* Production speeds are estimates are based on 16" centers and will vary depending on ink manufacturer, humidity of shop, and other variables.  
\*\* Recommended maximum image width = heater width minus 4" (10cm).



# INFRARED DRYER ACCESSORIES



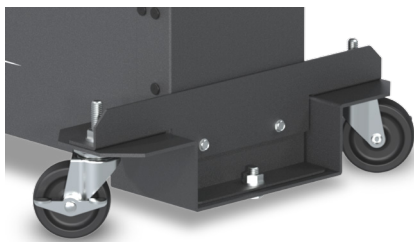
**EXHD**  
Add-On exhaust for  
D-100 and D-1000



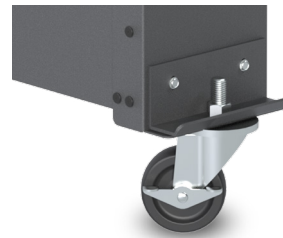
**SI-27**  
Stand for D-100



**SI-27 W/  
SI-27-DEMT**  
Stand for D-1000

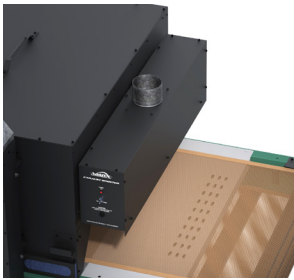


**WS-EDD**  
Drop Down Wheel Set for  
DB, LR & EC-I Dryers



**WS-EC**  
Standard Wheel Set for  
all non-tabletop Dryers

**WS-EHD**  
Drop Down Wheel Set for  
EC-II, ER & BR Dryers



## EXHAUST HOOD

### FEATURES

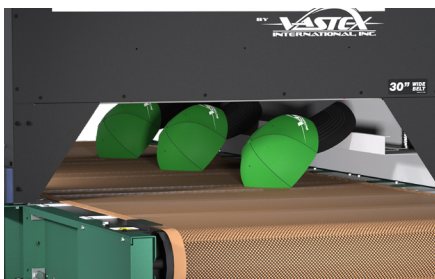
- Removes fumes at exit the dryer
- EXH-18 fits 18" (46cm) wide belts
- EXH-30 fits 30" (76cm) wide belts
- EXH-54 fits 54" (137cm) wide belts
- Available in 120v or 240v



## CONVEYOR AIR BAR

### FEATURES

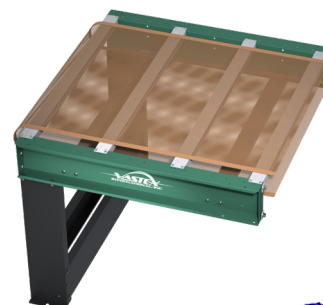
- Cools ink as garments exit the dryer
- CAB-18 fits 16-26" (40-66cm) wide belts
- CAB-30 fits 30" (76cm) wide belts
- CAB-54 fits 54" (137cm) wide belts
- CAB-78 fits 78" (198cm) wide belts
- Work on many non-Vastex dryers
- Available in 120v or 240v



## HAT SUPPORT RAIL

### FEATURES

- Angles hats so front is parallel with heaters
- HR-1 fits EconoRed II dryers
- HR-2 fits EconoRed III & BigRed Dryers



## CONVEYOR EXTENSIONS

Extend your conveyor in  
18" (46cm), 36" (92cm) and  
54" (137cm) increments



# D-100, & D-1000

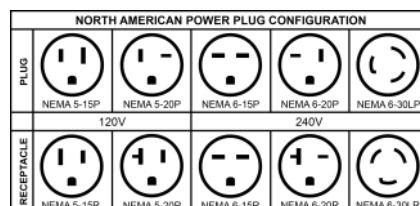
## Technical Specifications



	D-100	D-1000
Heater Warranty	15 Year	15 Year
Defect Warranty	3 Year	3 Year
Shirts / Hr Plastisol	110+@ 25 secs.	110+@ 25 secs.
Shirts/hr wb/discharge	50+@ 70 secs.	50+@ 70 secs.
Time in Tunnel Range (mm:ss)	00:17 - 01:20	00:17 - 01:20
Belt Speed	0.6 - 7.4 FPM (0.18 - 2.3 MPM)	0.6 - 7.4 FPM (0.18 - 2.3 MPM)
Exhaust (Free Air)	177 CFM (optional)	177 CFM (optional)
Exhaust Diameter	4" (10.16 cm)	4" (10.16 cm)
Overall Length	46" (117 cm)	56" (143 cm)
Overall Width	24" (61 cm)	32" (81 cm)
Overall Height	24" (61 cm)	24" (61 cm)
Belt Width	18" (45.7 cm)	26" (66 cm)
Chamber Length	18" (45.7 cm)	18" (45.7 cm)
Chamber Infeed Width	19.5" (49.5 cm)	27.75" (70.5 cm)
Chamber Infeed Height (adjustable)	2" - 7" (5 - 17.7 cm)	2" - 7" (5 - 17.7 cm)
Heat Range (@ Heater)	0-750 F° (0-399 C°) @ 120 or 240V	0-750 F° (0-399 C°) @ 120 or 240V
Heater Size	16"x16"(40.6x40.6 cm)	16"x20"(40.6x50.8 cm)
Total Wattage	1,625 Watts	2,050 Watts
Cost/hr to operate based on 10 cents/kwh	16 cents	20 cents
Electrical Specs** Chamber	120V / 12.5A / NEMA 5-15P 240V / 6.5A / 1 Ph. / NEMA 6-15P	120V / 16.5A / NEMA 5-20P 240V / 8.2A / 1 Ph. / NEMA 6-15P
Electrical Connection	Cordset Included	Cordset Included
Optional Power	208V / 6.5A / 1 Ph. / NEMA 6-15P	208V / 8.2A / 1 Ph. / NEMA 6-15P
Unit Weight	89 lbs (41 kg)	114 lbs (52 kg)
Shipping Weight**	Box 1 - 57 lbs (26 kg) Box 2 - 16 lbs (7.3 kg) Box 3 - 21 lbs (9.6 kg) Boxes on skid - 115 lbs (52 kg)	Box 1 - 17 lbs (7.7 kg) Box 2 - 24 lbs (10.9 kg) Box 3 - 35 lbs (15.9 kg) Box 4 - 43 lbs (19.5 kg) Box 5 - 11 lbs (5 kg) Boxes on Skid - 226 lbs (105.5 kg)
Shipping Dimensions**	Box #1 - 54" x 29" x 8" (138 x 74 x 21 cm) Box #2 - 21" x 21" x 7" (53x53x18 cm) Box #3 - 25" x 18" x 6" (64 x 46 x 15 cm) On Skid - 60" x 32" x 22" (153 x 82 x 56 cm)	Box #1 - 27" x 21" x 7" (69 x 54 x 18 cm) Box #2 - 31" x 21" x 9" (79 x 54 x 23 cm) Box #3 - 36" x 31" x 8" (92 x 79 x 21 cm) Box #4 - 36" x 31" x 8" (92 x 79 x 21 cm) Box #5 - 31" x 15" x 8" (79 x 38 x 21 cm) On Skid - 49" x 37" x 36" (125 x 94 x 92 cm)

\* Production speeds are estimates are based on 16" centers and will vary depending on ink manufacturer, humidity of shop, and other variables.

\*\*All shipping weights and dimensions are for continental US shipping only. Call for other shipping specifications. Ex-works from Bethlehem, PA.



1 in = 2.54 cm  
1 lb = 0.454 kg